

HPL ..2

POMPE E MOTORI AD INGRANAGGI GEAR PUMPS AND MOTORS ZAHNRADPUMPEN UND -MOTOREN

HPL PA2

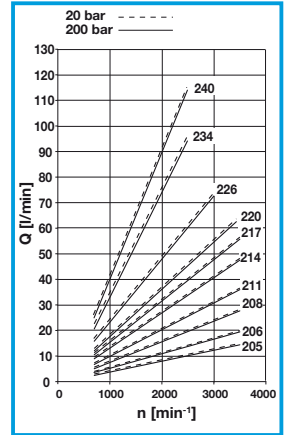
POMPE AD INGRANAGGI GEAR PUMPS ZAHNRADPUMPEN

DATI TECNICI TECHNICAL DATA TECHNISCHE MERKMALE



GRUPPO GROUP BAUREIHE	TIPO TYPE TYP	CILINDRATA TEORICA NOMINAL DISPLACEMENT FORDERVOLUMEN (TM)		PRESSIONE PRESSURE DRUCK INTERMITTENTE INTERMITTIERENDER				VELOCITÀ DI ROTAZIONE SPEED DREHZAHL		MASSA WEIGHT GEWICHT			
		cm ³	in ³	CONTINUA CONTINUOUS DAUER		PICCO PEAK SPITZEN		MAX	MIN	kg	lbs		
				bar	psi	bar	psi						
2	05	4,50	0,27	240	3481	260	3771	300	4351	3500	700	2,30	5,07
	06	6,00	0,37	240	3481	260	3771	300	4351			2,40	5,29
	08	8,50	0,52	230	3336	250	3626	280	4061			2,40	5,29
	11	11,00	0,67	230	3336	250	3626	280	4061			2,40	5,29
	14	14,50	0,88	230	3336	250	3626	280	4061			2,80	6,17
	17	17,00	1,04	230	3336	250	3626	280	4061			2,80	6,17
	20	19,50	1,19	200	2901	220	3191	250	3626			2,80	6,17
	26	26,00	1,59	180	2611	190	2756	210	3046			3,10	6,83
	34	34,00	2,07	150	2175	170	2466	190	2756			3,40	7,50
	40	40,50	2,47	140	2031	160	2321	180	2611			2500	3,60

DIAGRAMMA PORTATE DIAGRAMS KENNLINIEN



HPL MA2

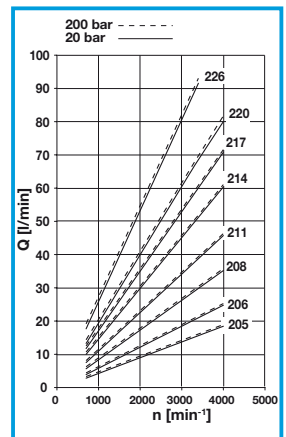
MOTORI AD INGRANAGGI GEAR MOTORS ZAHNRADMOTOREN

DATI TECNICI TECHNICAL DATA TECHNISCHE MERKMALE



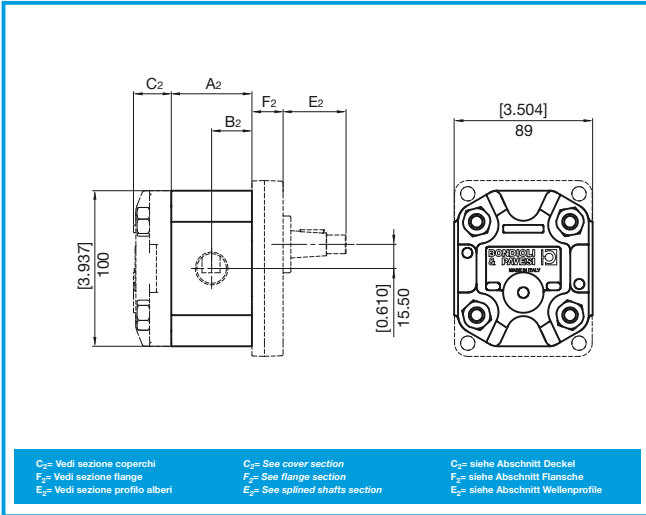
GRUPPO GROUP BAUREIHE	TIPO TYPE TYP	CILINDRATA TEORICA NOMINAL DISPLACEMENT FORDERVOLUMEN (TM)		PRESSIONE PRESSURE DRUCK INTERMITTENTE INTERMITTIERENDER				VELOCITÀ DI ROTAZIONE SPEED DREHZAHL		MASSA WEIGHT GEWICHT			
		cm ³	in ³	CONTINUA CONTINUOUS DAUER		PICCO PEAK SPITZEN		MAX	MIN	kg	lbs		
				bar	psi	bar	psi						
2	06	6,00	0,37	240	3481	260	3771	300	4351	4000	700	2,40	5,29
	08	8,50	0,52	230	3336	250	3626	280	4061			2,40	5,29
	11	11,00	0,67	230	3336	250	3626	280	4061			2,40	5,29
	14	14,50	0,88	230	3336	250	3626	280	4061			2,80	6,17
	17	17,00	1,04	230	3336	250	3626	280	4061			2,80	6,17
	20	19,50	1,19	200	2901	220	3191	250	3626			2,80	6,17
	26	26,00	1,59	180	2611	190	2756	210	3046			3400	3,10

DIAGRAMMA PORTATE DIAGRAMS KENNLINIEN



**DIMENSIONI
SIZE
ABMESSUNGEN**

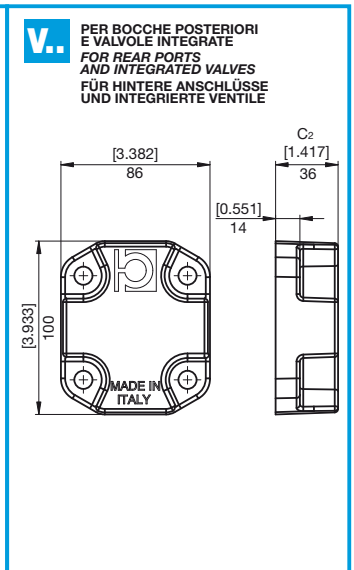
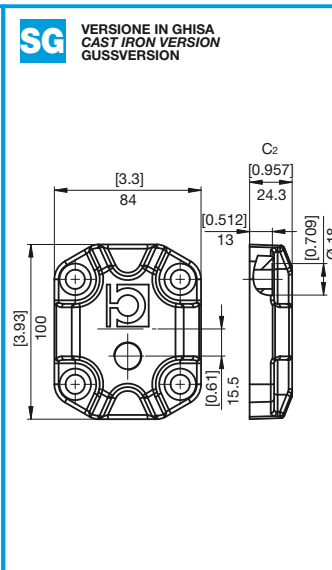
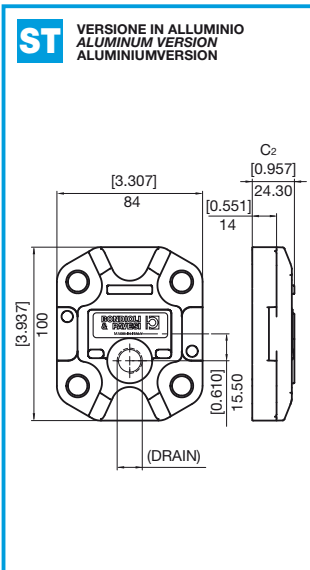
HPL..2



**DIMENSIONI
SIZE
ABMESSUNGEN**

GRUPPO GROUP BAUREIHE	TIPO TYPE TYP	A ₂		B ₂	
		mm	in	mm	in
2	05	49,15	1,935	24,6	0,968
	06	51,85	2,041	25,9	1,021
	08	56,35	2,219	28,2	1,109
	11	60,85	2,396	30,4	1,198
	14	67,25	2,648	33,6	1,324
	17	71,75	2,825	35,9	1,412
	20	76,25	3,002	38,1	1,501
	26	88,55	3,486	44,3	1,743
	34	102,55	4,037	51,3	2,019
	40	115,07	4,530	57,5	2,265

**COPERCHI
COVERS
DECKEL**

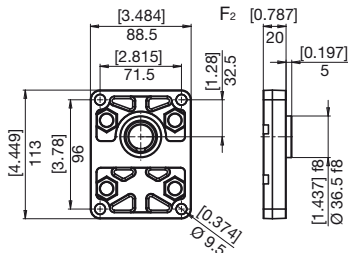


FLANGE
FLANGES
FLANSCHEN

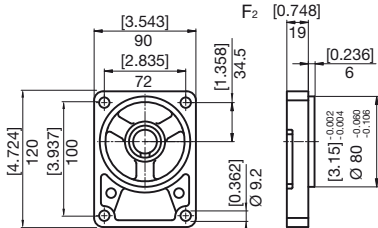
VERSIONE IN ALLUMINIO
ALUMINUM VERSION
ALUMINIUMVERSION

HPL...2

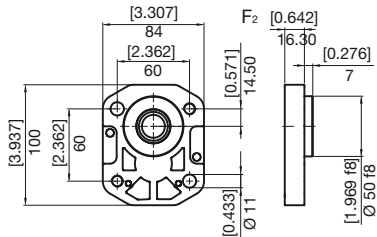
M



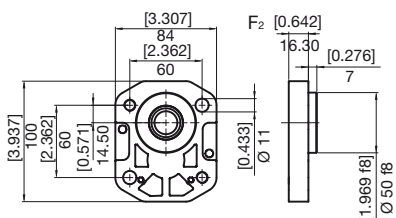
N



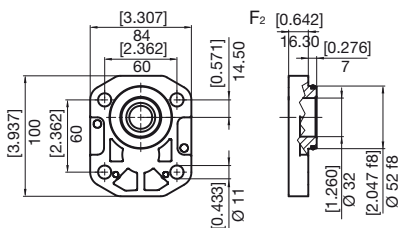
O



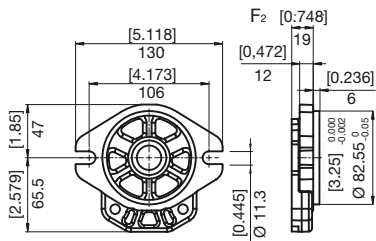
P



R



S



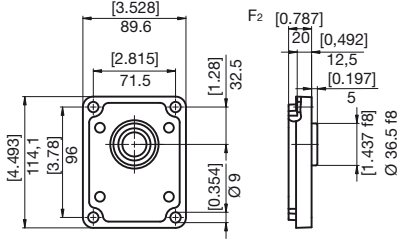


FLANGE
FLANGES
FLANSCH

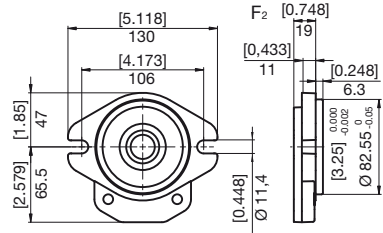
VERSIONE IN GHISA
CAST IRON VERSION
GUSSVERSION

HPL..2

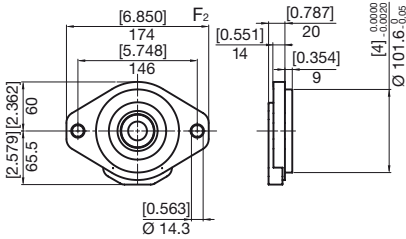
L



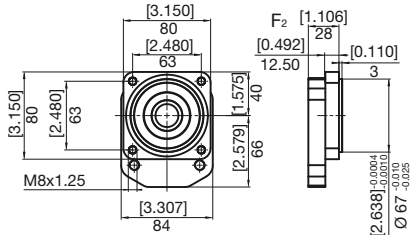
Q



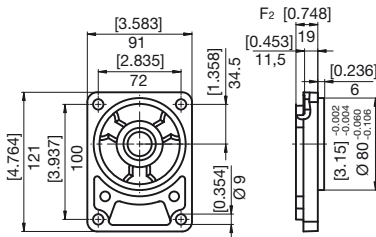
T

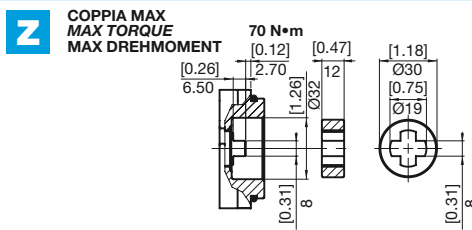
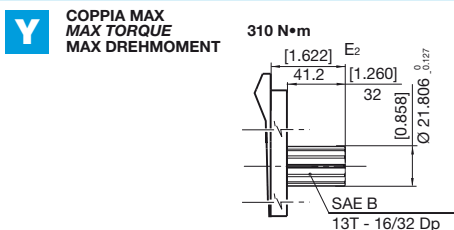
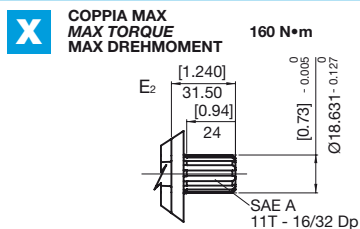
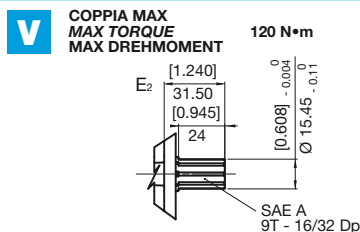
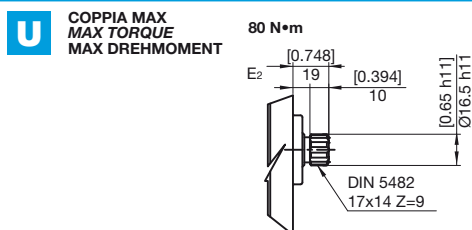
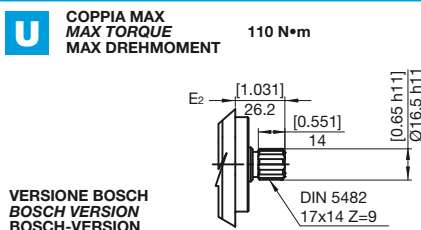
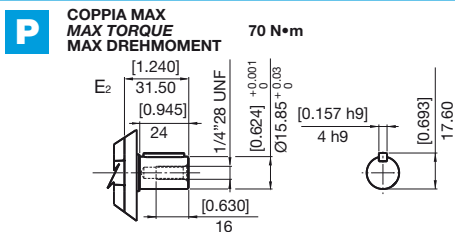
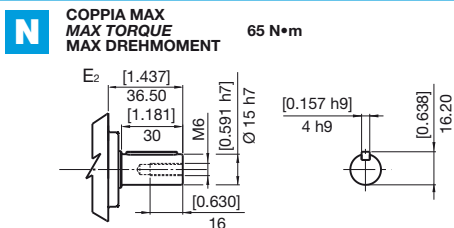
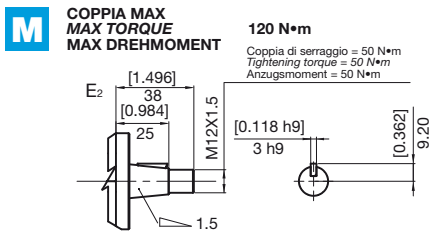
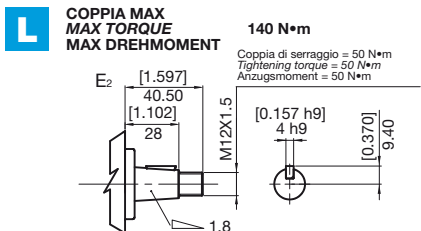


U



V



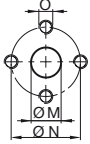




**BOCCHIE
PORTS
ANSCHLÜSSE**

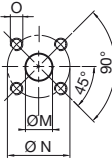
HPL..2

E LATERALE
LATERAL
SEITLICH



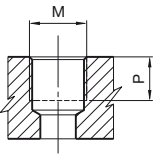
TIPO TYPE TYP	M		N		O	
	mm	in	mm	in		Nm
E3	13	0,51	30	1,18	M6	10
E5	20	0,79	40	1,57	M8	15

X LATERALE
LATERAL
SEITLICH



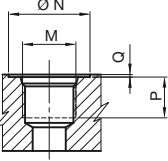
TIPO TYPE TYP	M		N		O	
	mm	in	mm	in		Nm
X4	15	0,59	35	1,38	M6	10
X5	15	0,59	40	1,57	M6	10
X6	20	0,79	40	1,57	M6	10
X8	27	1,06	55	2,17	M8	15

G LATERALE
LATERAL
SEITLICH
T POSTERIORE
REAR
HINTEN



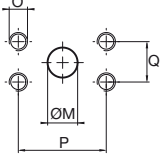
TIPO TYPE TYP	M		P	
		Nm	mm	in
*G3	3/8" GAS BSPP	38	12	0,47
G4	1/2" GAS BSPP	50	16	0,63
G6	3/4" GAS BSPP	90	19	0,75
G7	1" GAS BSPP	130	19	0,75
T4	1/2" GAS BSPP	50	14,5	0,63
T6	3/4" GAS BSPP	40	19	0,75

U LATERALE
LATERAL
SEITLICH
C POSTERIORE
REAR
HINTEN



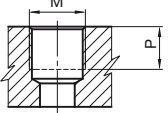
TIPO TYPE TYP	DIMENSIONE SIZE GRÖSSE	N		P		Q		M	
		mm	in	mm	in	mm	in		Nm
*U3	3/8"	25	0,98	13	0,51	0,3	0,01	9/16-18 UNF	25
U5	5/8"	34	1,34	17	0,67	0,3	0,01	7/8-14 UNF	70
U6	3/4"	41	1,61	19	0,75	0,3	0,01	1-1/16-12 UNF	90
U7	1"	49	1,93	20	0,79	0,3	0,01	1-5/16-12 UNF	130
C5	5/8"	34	1,34	17	0,67	0,3	0,01	7/8-14 UNF	70
C6	3/4"	41	1,61	19	0,75	0,3	0,01	1-1/16-12 UNF	40

N LATERALE
LATERAL
SEITLICH



TIPO TYPE TYP	DIMENSIONE SIZE GRÖSSE	M		P		Q		O	
		mm	in	mm	in	mm	in		Nm
N4	1/2"	13	0,51	38,1	1,49	17,5	0,68	5/16-18UNC-2B	15
N6	3/4"	20	0,79	47,6	1,87	22,2	0,87	3/8"-16UNC-2B	25
N7	1"	27	1,06	52,4	2,60	26,2	1,03	3/8"-16UNC-2B	30

M










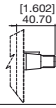



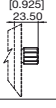
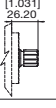
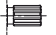


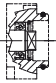
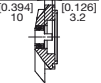




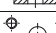




TIPO TYPE TYP	M		P	
		Nm	mm	in
*M2	M14x1,5	17	12	0,47

* Drenaggio

* Drain Port

* Lecköl

ESTREMITÀ ALBERO SHAFT PROFIL WELLENDEN	FLANGE FLANGE FLANSCH							
	M 	N 	O 	R 	S 	T 	U 	
L 	<input checked="" type="checkbox"/>							
M 		<input checked="" type="checkbox"/>						
N 	<input checked="" type="checkbox"/>							
P 					<input checked="" type="checkbox"/>			
U 	<input checked="" type="checkbox"/>							
V 					<input checked="" type="checkbox"/>			
X 					<input checked="" type="checkbox"/>			
Y 						<input checked="" type="checkbox"/>		
Z 				<input checked="" type="checkbox"/>				
BOCCHE PORTS ANSCHLÜSSE								
E 	<input checked="" type="checkbox"/>							
G 	<input checked="" type="checkbox"/>				<input checked="" type="checkbox"/>	<input checked="" type="checkbox"/>	<input checked="" type="checkbox"/>	
X 		<input checked="" type="checkbox"/>	<input checked="" type="checkbox"/>	<input checked="" type="checkbox"/>				
U 					<input checked="" type="checkbox"/>	<input checked="" type="checkbox"/>		
N 					<input checked="" type="checkbox"/>	<input checked="" type="checkbox"/>		
C 					<input checked="" type="checkbox"/>	<input checked="" type="checkbox"/>		
T 	<input checked="" type="checkbox"/>	<input checked="" type="checkbox"/>	<input checked="" type="checkbox"/>	<input checked="" type="checkbox"/>	<input checked="" type="checkbox"/>	<input checked="" type="checkbox"/>	<input checked="" type="checkbox"/>	



ISTRUZIONI PER L'ORDINAZIONE
ORDERING INSTRUCTIONS
BESTELLANLEITUNG

HPL..2



SERIE
SERIES
SERIE

PRODOTTO
PRODUCT
PRODUKT

MA - Motore
PA - Pompa singola
PT - Pompa predisposta

MA - Motor
PA - Pump
PT - Adapted Pump

MA - Motor
PA - Pumpe
PT - Vorbereitete Pumpe

GRUPPO
GROUP
BAUGROSSE

2

CILINDRATA
DISPLACEMENT
FÖRDERVOLUMEN

05 - 4,50
06 - 6,00
08 - 8,50
11 - 11,00
14 - 14,50
17 - 17,00
20 - 19,50
26 - 26,00
34 - 34,00
40 - 40,50

SENSO DI ROTAZIONE
ROTATION
DREHRICHTUNG

S - Antioraria/sinistra
D - Oraria/destra
H - Bidirezionale drenaggio interno
B - Bidirezionale drenaggio esterno posteriore

S - Counterclockwise
D - Clockwise
H - Reversible ind drain
B - Reversible rear. drain. pont

S - Linkslauf
D - Rechtslauf
H - reversibel, Lecköl intern, Anschluß seitlich
B - reversibel, Lecköl extern, Anschluß hinten

SET VALVOLE
VALVE SETTING
VENTILEINSTELLUNG
(bar)

COPERCHI - COVERS - DECKEL

ST - Standard
SG - Versione in ghisa
Cast iron version
Gussversion

V. - Con valvole (Vedi sez. valvole)
With valves (See valves section)
Mit Ventilen
(siehe Abschnitt Ventile)

GUARNIZIONI - SEALS - DICHTUNGEN

B - NBR
R - NBR alte pres. (picco 25 bar)
For high pres. (peak 25 bar)
Hochdruck (spitzen 25 bar)

V - Viton
W - Viton alte pres. (picco 25 bar)
For high pres. (peak 25 bar)
Hochdruck (spitzen 25 bar)

BOCCHIE STD - STANDARD PORT - STANDARD ANSCHLÜSSE
CILINDRATA - DISPLACEMENT - FÖRDER-/SCHLUCKVOLUMEN

5.....8		11	14.....20		26	34.....40	DRAIN
Pompe - Pumps - Pumpen	IN/OUT	Pompe - Pumps - Pumpen	IN/OUT	Pompe - Pumps - Pumpen	IN/OUT	Pompe - Pumps - Pumpen	IN/OUT
E3	E3		E5	E3	E5	E5	M2
G4	G4		G6	G4	G6	G6	G3
X5	X4	X6 X4	X6	X4	X6	X5	M2
U6	U5		U6	U5	U6	U5	U3
N4	N4*		N6	N4	N7	N6	U3
C6	C5		C6	C5	C6	C5	U3
T6	T4		T6	T4	T6	T4	G3

MOTORI - MOTORS - MOTOREN OUT/IN
MOTORI BIDIR. IN=OUT - REVERS. MOTORS IN=OUT -
BIDIREK.MOTOREN IN=OUT

FLANGIA ANTERIORE
FRONT FLANGE
VORDERER FLANSCH

L - Europea in ghisa
M - Europea
N - Tedesca
O - Tedesca D 50 2 fori DX
P - Tedesca D 50 2 fori SX
Q - Tedesca D 52
R - SAE A 2 fori
S - SAE A 2 fori
T - SAE B 2 fori in ghisa
U - Perkins
V - Tedesca in ghisa

L - European cast iron
M - European
N - German
O - German D 50 2 holes right
P - German D 50 2 holes left
Q - SAE A 2 holes cast iron
R - German D 52
S - SAE A 2 holes
T - SAE B 2 holes cast iron
U - Perkins
V - German cast iron

L - EU-Norm G3
M - EU-Norm
N - DIN-Norm
O - DIN-Norm D 50 Bohrungen rechts
P - DIN-Norm D 50 Bohrungen links
Q - SAE A 2 Bohrungen Guß
R - DIN-Norm D 52
S - SAE A 2 Bohrungen
T - SAE B 2 Bohrungen Guß
U - Perkins
V - Din gussversion

ESTREMITÀ D'ALBERO
SHAFT PROFIL
WELLENENDE

L - Conico (1:8)
M - Conico (1:5)
N - Cilindrico D15 europeo
P - Cilindrico SAE "A"
U - Scanalato DIN 5482
V - Scanalato SAE "A" 9T
X - Scanalato SAE "A" 11T
Y - Scanalato SAE "B" 13T
Z - Dente frontale

L - Tapered (1:8)
M - Tapered (1:5)
N - D15 European parallel shaft
P - SAE "A" parallel shaft
U - DIN 5482 splined
V - SAE "A" 9T splined
X - SAE "A" 11T splined
Y - SAE "B" 13T splined
Z - Tang drive

L - Kegel (1:8)
M - Kegel (1:5)
N - zylindrisch D15 (E-norm)
P - zylindrisch SAE "A"
U - Keilwelle DIN 5482
V - Keilwelle SAE "A" 9T
X - Keilwelle SAE "A" 11T
Y - Keilwelle SAE "B" 13T
Z - Kreuzprofil

* Non disponibile per cilindrata 05
* Not available for displacement 05
* Nicht verfügbar für förderolumen 05